

Massachusetts Historical Commission  
Massachusetts Archives Building  
220 Morrissey Boulevard  
Boston, Massachusetts 02125



Town Newburyport  
Place (neighborhood or village)

Address 7-15 State Street

Historic Name

Uses: Present Commercial

Original Commercial

Date of Construction c.1811

Source visual inspection

Style/Form Federal

Architect/Builder unknown

Exterior Material:

Foundation Granite

Wall/Trim Brick, Granite

Roof Asphalt Shingle

Outbuildings/Secondary Structures

none

Major Alterations (with dates) late 19th c. - window  
replacements; c.1930 - alterations to first floor  
storefronts

Condition good

Moved  no  yes Date

Acreage 2076 SF

Setting central business district



Recorded by Lisa Mausolf

Organization Newburyport Historical Commission

Date (month/year) June 1999

## BUILDING FORM (7-15 State Street)

### ARCHITECTURAL DESCRIPTION

*Describe architectural features. Evaluate the characteristics of the building in terms of other buildings within the community.*

Located at the southeast corner of State and Middle Streets, 7-15 State Street is a three-story brick block with a nine-bay facade and an angled bay at the corner. Above the brick modillion cornice, several tall brick chimneys rise from the interior roof slopes. The first floor of the facade is divided into three storefronts and two upstairs entrances. Most of the first floor dates to the early 20th century but it also incorporates some earlier features. The northernmost storefront (#7 State Street) has an angled display window which is set in a metal frame. The display window projects above the base and is capped by a granite lintel. Metal posts are visible inside the storefront. The entrance, to the south of the windows, is recessed behind a granite pier. A late 19th century projecting entablature with a wide plain frieze extends above the adjacent entrance to #9 upstairs and the storefront at #11. The entrance to the upstairs (at #9) is set within a vertical flushboard recess. The entrance to #11 has a glass and wood door and a large display window with a recessed panel bulkhead. The door leading to #13 upstairs displays five horizontal panels and is capped by a glass transom. It dates to the early 20th century. The storefront to the south is the best preserved and retains large display windows outlined by raised circular moldings, a recessed panel bulkhead, a cornice and transom over the glass and panel door. The first floor of the Middle Street elevation is punctuated five arched openings, most of which are semicircular in shape with granite keystones and springblocks. The openings contain a mix of multi-paned windows and a set of double doors. The upper two stories of the building display 2/2 windows with splayed granite lintels and plain sills.

The rear of the building includes a mix of 12/8 windows and modern multi-light sash. All of the windows including the smaller 2/2 on the third floor have header brick lintels and granite sills. Extending behind the main block is a two-story clapboarded, modern, gabled addition resting on a concrete foundation and lit by 2/2 sash.

### HISTORICAL NARRATIVE

*Describe the history of the building. Explain its associations with local (or state) history. Include uses of the building and the role(s) the owners/occupants played within the community.*

Like its neighbors, this building is thought to have been constructed shortly after the Great Fire of 1811 wiped out much of what is now downtown Newburyport. The first directory printed for Newburyport indicates that in 1849, Conant's Express was located at 7 State Street, Dana Dexter had a furniture and variety store at 9 State Street and Edward Emerson sold dry goods at 13 State Street. The storefront at 15 State Street was occupied by Edward Williams and by John Poole (1853), both of whom sold clothing.

In 1865 Stephen Fowle opened a newspaper, periodical and confectionery establishment at 11 State Street, a store previously operated by Andrew Haynes in 1860. By about 1873 Fowle's had outgrown the original location and moved next door to 13 State Street where the store remained for 27 years before moving to 17 State Street in 1900.

Louis F. Barton, shoe dealer, was the proprietor of a shoe store at 11 State Street as early as 1882, succeeding his brother-in-law, L.C. Pike. The shoe store was later operated here by Rufus Thurlow from at least 1910. Thurlow's Family Shoes was still here into the 1970s.

In the late 19th and early 20th century the storefront at 7 State Street was home to Caleb Toppan's clothing store and was later occupied by a barber shop for many years, operated by Richard Farina from the 1930s to 1950s and later known as Santalys or the Sanitary Barber Shop. The storefront at 15 State Street contained James Andriotakes' shoe repair shop in the 1930s and 1940s and later was leased to a travel agent and a thrift store.

Recommended for listing in the National Register of Historic Places. *If checked, you must attached a completed National Register Criteria Statement form.*

## INVENTORY FORM CONTINUATION SHEET

Town  
NewburyportProperty Address  
7-15 State Street  
Area(s) Form No.

Massachusetts Historical Commission  
Massachusetts Archives Building  
220 Morrissey Boulevard  
Boston, Massachusetts 02125

L,U	2169
-----	------

## BIBLIOGRAPHY and/or REFERENCES

Colby, Grace L. "Fowle's News Company is Marking Centenary", *Newburyport Daily News*, May 15, 1952.  
Currier, John J. *History of Newburyport, Massachusetts, 1764-1906*, vols. 1 & 2. Newburyport: 1906 & 1909.  
Irving, Ron. Unpublished research on State Street.  
Massachusetts Historical Commission. *Historic Resources Inventory: Newburyport*.  
*Newburyport City Directories*, various dates.

## Maps

*Atlas of Essex County, Massachusetts*. Philadelphia: D.B. Beers & Co., 1872.  
*Atlas of Essex County, Massachusetts*. Boston: George H. Walker, 1884.  
Beck & Paul. *City of Newburyport*. Framingham, Mass.: Bigelow and Hazen, 1880.  
*Plan of Newburyport*. Philadelphia: H. McIntyre, 1851.  
Sanborn Insurance Maps of Newburyport, 1888, 1894, 1906, 1914, 1924, 1946. Massachusetts State Library, Boston, Massachusetts.

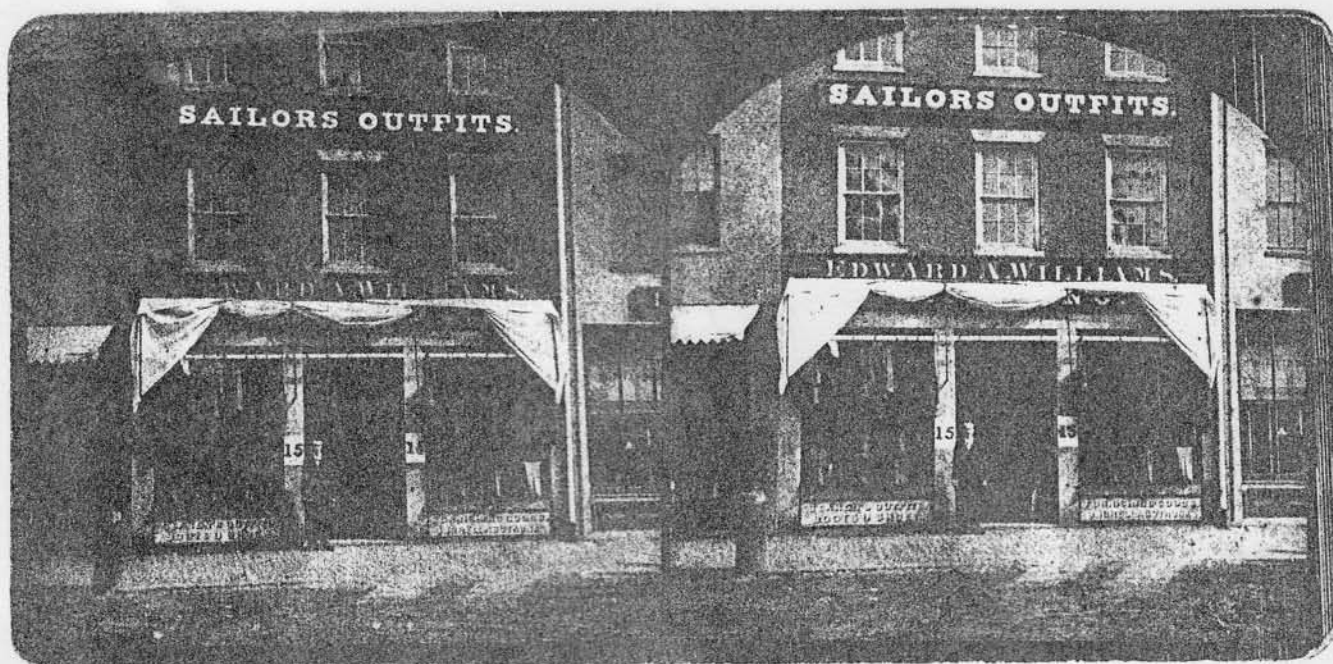
INVENTORY FORM CONTINUATION SHEET

Massachusetts Historical Commission  
Massachusetts Archives Building  
220 Morrissey Boulevard  
Boston, Massachusetts 02125

Town  
Newburyport

Property Address  
7-15 State Street  
Area(s) Form No.

L,U	2169
-----	------



Source: Newburyport Public Library, S336.