



FORM A - AREA SURVEY

MASSACHUSETTS HISTORICAL COMMISSION
Office of the Secretary, State House, Boston

Form numbers in this area	Area no.
83-88	C

1. Town Newburyport

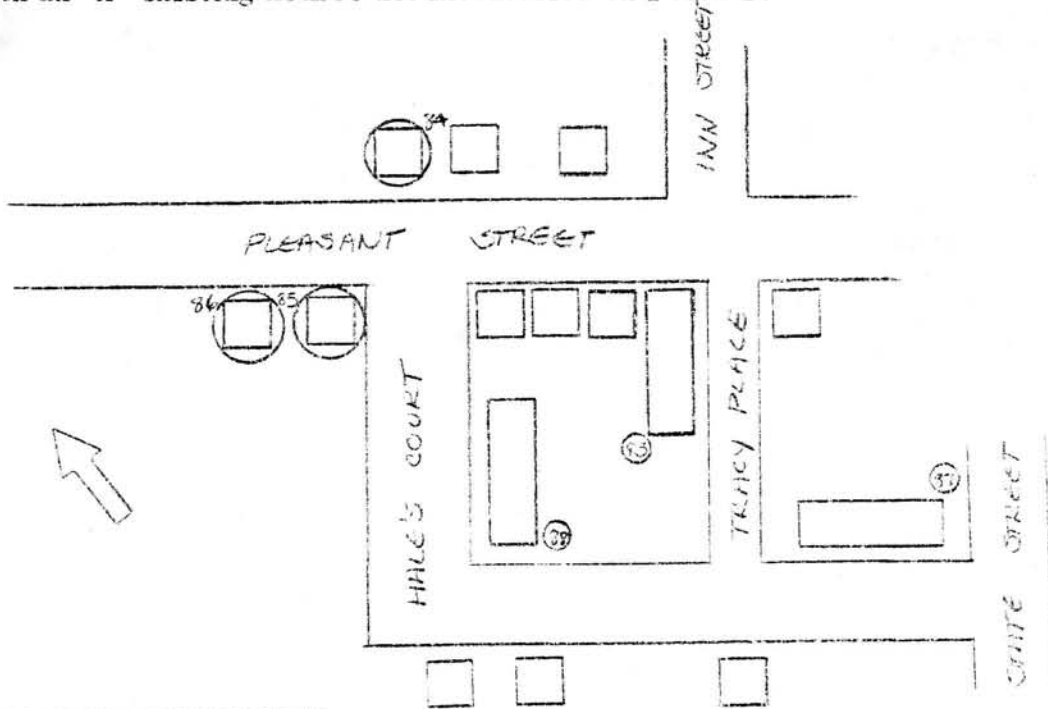
Name of area (if any) Pleasant Street Industrial District

3. General date or period late 19th Century

2. Photo (3x3" or 3x5")
Staple to left side of form
Photo number CCCC-32, CCCC-34
A-3, A-25

4. Is area uniform (explain):
No, There is a variety of in style? Victorian styles.
Yes, buildings are in in condition? good condition.
Yes, ownership is in type of ownership? private.
No, there is a mixture of in use? commercial and industrial use with several residential buildings.

5. Map. Use space below to draw a general map of the area involved. Indicate any historic properties for which individual reports are completed on Forms B thru F, using corresponding numbers. Show street names (including route numbers, if any) and indicate north. Indicate with an "x" existing houses not inventoried on Form B.



DO NOT WRITE IN THIS SPACE
USGS Quadrant _____
MHC Photo no. _____

6. Recorded by Mary Jane Stirgwalt

Organization Office of Community Development

Date 7/28/80

(over)

7. Historical data. Explain the historical/architectural importance of this area.

This area of Newburyport developed as an important industrial district during the 19th century. This development was well established by the 1830's when the Newburyport Hosiery Company was operating in a building on Pleasant Street. In 1837 the Bartlet Steam Mills, for the manufacture of cotton sheeting and shirtings, was established and two large brick factories were built on the parcel of land bordering on Pleasant and Inn Streets. This mill employed an average of 400 people and produced 2,000,000 yards of fabric a year. This undoubtedly lent an industrial flavor to the area.

During the same period the area between Pleasant Street and Prince Place was occupied by several homes, livery stables and blacksmith shops. In the next several decades, the changes in Newburyport's economy made quite an impact on this area of the city. Shoemaking, previously an industry carried out on a small scale in homes or workshops of four or five men, was organized into larger organizations. By 1872, there was a shoe manufacturer at the Southeast corner of Hale's Court and State Street. There was also a small mill on Prince Place called the Hope Mills. This firm was noted for coffee and spices and was established in 1867.

The 1870's and 1880's were decades of extreme growth in the shoe industry in Newburyport. Elisha P. Dodge built the city's largest shoe factory, today 21-23 Pleasant Street, in 1873. The business grew rapidly and an expanded facility was needed within ten years. As is true of many of the men involved in the shoemaking industry, Elisha P. Dodge was in business under several different partnerships. Between 1870 and 1880 the shoe manufacturers in the area adjacent to the central business district included the firms of Dodge and Balch, Nathan D. Dodge and Son, N. D. Dodge and Bliss Company. In 1867 the firm Dodge and Danforth was manufacturing ladies shoes in the second story of a wooden building on the Southeast corner of Pleasant Street and Hale's Court. The shoe industry prospered in Newburyport until the 1930's. The William D. Hannah Shoe Company occupied the E. P. Dodge Building and most of the other buildings on Hale's Court and Tracy Place during the 1920's. At least one building, the E. P. Dodge Building was occupied by a shoe manufacturer until the 1950's.

(cont.)

8. Bibliography and/or references such as local histories, deeds, assessor's records, early maps, etc.

1851 Plan of Newburyport, Mass. H. McIntire

1872 Map of the City of Newburyport, Mass. D. G. Beers and Co.

1851, 1871 City Directories

J. J. Currier, History of Newburyport 1764-1905, vols. I and II, reprint Newburyport 1977

S. Emery, Reminiscences of a Newburyport Nonagenarian, Newburyport, 1879.

Newburyport Herald March 5, 1839

Assessor's Records 1890-1980

INVENTORY FORM CONTINUATION SHEET

MASSACHUSETTS HISTORICAL COMMISSION
Office of the Secretary, Boston

Community: Newburyport	Form No: C
Property Name: Pleasant Street Industrial District	

Indicate each item on inventory form which is being continued below.

FORM A - AREA SURVEY (CONTINUED)

Architecturally this area has excellent examples of late 19th century industrial and commercial architecture. Earlier domestic architecture which had been on the land was removed. The only residential structures presently in the area are two homes on Prince Place. Hugh McGlew, a blacksmith with a shop across the street, built the home at 2 Prince Place between 1851 and 1872. It is vernacular Victorian.

Today the buildings in the Pleasant Street industrial area are occupied by a number of industrial and commercial interests. The E. P. Dodge Building and Nathan D. Dodge Building are still largely industrial in use.

Staple to Inventory form at bottom